

CS10 Deployment and Connection

Package Contents

- CS10/CS10-D
- White magnetic mesh cover (Standard), black is optional: You can choose according to the style of your conference room.
- Assembly Fixing Bracket (Standard): Used to balance the pressure of the equipment on the ceiling panel, providing better sound performance
- Dust cover (Standard): Used to secure the network cable and prevent dust.
- 6 dust cover screws (Standard).
- Deployment Instruction Template (Standard): Used to assist in drilling holes in the ceiling
- Multilingual QSG (Standard): English, French, German, Spanish, Chinese
- Bracing Bridge (to be provided by user): Used to distribute the pressure of the ceiling board and transfer the pressure to the ceiling framework
- Safety Rope (For Device)
- Safety Rope (For White Mesh Cover)

Method 1: Use the Bracing Bridge

Introduction

This installation method is suitable for removable ceiling structures. Generally, such ceilings consist of a framework and ceiling panels. This article mainly introduces the installation method using adjustable brackets.

Precautions before Installation

Before installation, there are some important points you need to know about the installation process, so that you can better adapt to your ceiling.

Item	Description
------	-------------

<p>Ceiling Installation Guidelines</p>	<p>If your ceiling meets the following requirements, you can use the bracing bridge to deploy devices:</p> <ul style="list-style-type: none"> • Removable ceiling panel. • The ceiling load capacity is less than or equal to 4.7 kg, and the ceiling frame load capacity is greater than 6.3 kg. • The ceiling thickness should not exceed 3.5 cm. • The bracing bridges default to supporting two specifications: 400-438 mm and 600-638 mm. Make sure that the width of the ceiling frame is compatible. • The T-shaped ceiling framework can accommodate slot heights of 22mm, 24mm, 32mm, and 38mm. • The triangular keel models are 90-sided, 100-sided, and 120-sided; with upper edge dimensions of 25mm, 30mm, and 35mm.
<p>Installation location recommendation</p>	<ul style="list-style-type: none"> • Installation position: It is recommended to use the Yealink deployment tool. • Installation height: Refer to the Yealink Ceiling Speaker Coverage Area to determine the installation height.
<p>Security operation recommendations</p>	<p>The installation of CS10/CS10-D requires a certain level of professional expertise, so it is recommended to entrust the operation to professional installation workers as much as possible.</p> <p>If you choose to install it yourself, make sure that you have someone assist you.</p>
<p>Preparation before installation</p>	<ul style="list-style-type: none"> • Professional ceiling installation tools, including but not limited to ladders, power screwdrivers, etc. (to be provided by user). • CS10/CS10-D ($\Phi 294 \times H125.8$ mm / $\Phi 11.574 \times H4.952$ in, 2.808 kg) • Scalable bracket (Optional) + C-ring. • Deployment Instruction Template (Standard). • Allocate a network port in the ceiling for connecting the CS10/CS10-D; ensure that the network cable is Cat5e or higher. • Magnetic suction net cover (default white, black optional). • Installation instructions. • Safety rope.

Installation Steps

1. Drill holes in the ceiling.

- ① Find the cardboard for auxiliary punching in the product packaging.
- ② Use a marker to draw guidelines on the back of the ceiling panel (taking gypsum board as an example, the operation steps will not change for other materials). The guidelines should be drawn at the key points of the length and width of the gypsum board and connected to form a cross.
- ③ Align the guidelines on the cardboard with the guidelines on the plasterboard.
- ④ Drill holes in the ceiling.

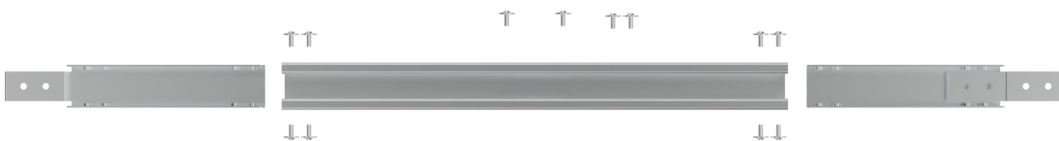


NOTE

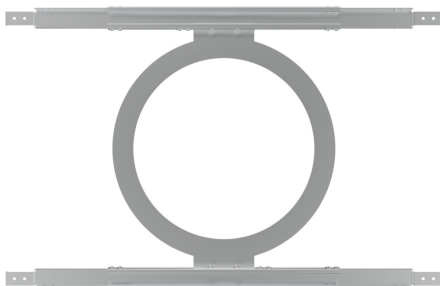
- 1. When drilling holes, please make sure that you do a good job of safety protection, or have a professional operate.
- 2. Please note that the method shown below is a recommended installation method. You can perform the installation actions according to your actual situation, ensuring that the final installation is stable and secure. The specific process does not have strict sequential restrictions.

2. Assemble the adjustable ceiling support bracket.

- ① You can assemble the bracket according to the specific size of your ceiling. The normal size of the ceiling is 400 x 400 mm or 600 x 600 mm. The following is a diagram of the composition of the bracing bridge.



- ② Assemble the assembly fixing bracket and the bracing bridge as shown in the diagram below:



3. Mount the bracing bridge on the ceiling.

NOTE

1. This bracing bridge is compatible with common T-bar and triangular ceiling grids. To distinguish your ceiling grid, please refer to [Notice on ceiling related content](#).
2. If your ceiling uses triangular keels, please do not tighten the screws that connect the expandable bracket to the ceiling after putting it into the ceiling, so as to avoid being unable to install the ceiling panels and adjust the equipment later.



4. Put the ceiling panel back in place.

NOTE

- You can choose to reposition the ceiling panel diagonally since the bracing bridges are not fixed, allowing temporary lifting.
- Ensure to align the assembly fixing bracket with the hole to avoid affecting the installation effect.

5. Connect the network cable and cover it with the dust cover (CS10/CS10-D has not been pushed into the ceiling yet).

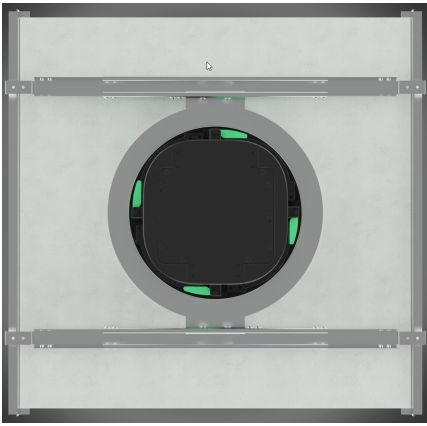
TIP

The device needs to be powered by PoE+.

6. Push CS10/CS10-D into the slot.

CAUTION

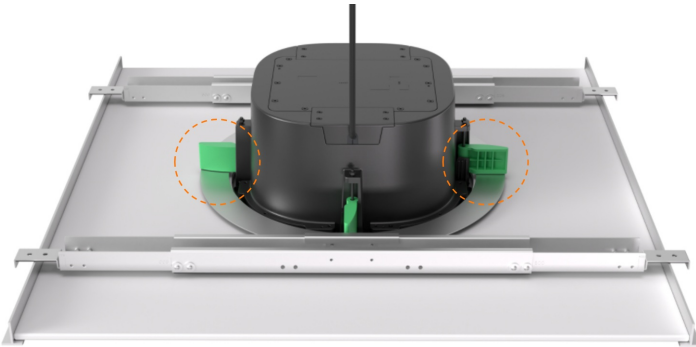
Please ensure there is someone nearby to assist during installation as pushing the device in will not automatically lock it in place. Please keep it lifted to prevent the device from falling.



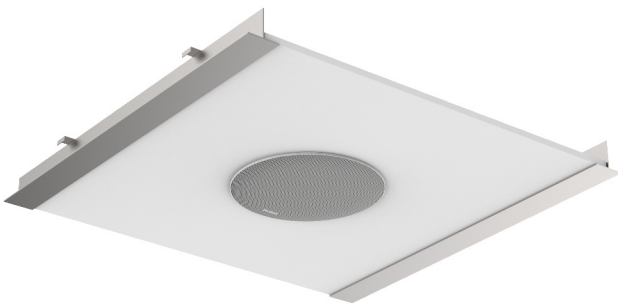
- Use a screwdriver to rotate the screw on the front side, so that the support arm mechanism opens and lowers until the support arm's ring fits snugly with the support bracket.

NOTE

Do not overtighten the screws. Make sure the support foot fits snugly with the ring.



- Attach the white mesh cover (optional black mesh cover available).



Method 2: Deployment without Bracing Bridge

Introduction

CS10/CS10-D supports various types of ceiling installations. If your ceiling is an integrated and non-removable type, this document may be helpful to you.

Precautions before Installation

Before installation, there are some important points you need to know about the installation process so that

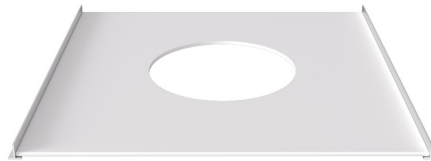
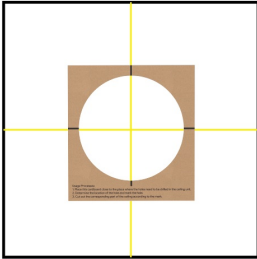
CS10/CS10-D can better adapt to your ceiling.

Item	Description
Ceiling Installation Guidelines	<p>If your ceiling meets the following requirements, you can use the assembly fixing bracket to deploy devices:</p> <ul style="list-style-type: none"> • Integrated and non-removable ceiling structures or ceiling with a load capacity greater than 4.7kg per square meter. <p>Note: Different materials have different load-bearing capacities for ceilings. Adjustments should be made according to the actual load-bearing capacity of the ceiling.</p> <ul style="list-style-type: none"> • The ceiling thickness should not exceed 3.5 cm. • The distance between the top of your ceiling and the ceiling surface layer should be at least 25cm. • If your ceiling is still under construction, you may consider reserving CS10/CS10-D installation positions from the beginning.
Installation location recommendation	<ul style="list-style-type: none"> • Installation position: It is recommended to use the Yealink deployment tool. • Installation height: Refer to the Yealink Ceiling Speaker Coverage Area to determine the installation height.
Security operation recommendations	<p>The installation of CS10/CS10-D requires a certain level of professional expertise, so it is recommended to entrust the operation to professional installation workers as much as possible.</p> <p>If you choose to install it yourself, make sure that you have someone assist you.</p>
Preparation before installation	<ul style="list-style-type: none"> • Professional ceiling installation tools, including but not limited to ladders, power screwdrivers, etc. (to be provided by user). • CS10/CS10-D ($\Phi 294 \times H125.8$ mm / $\Phi 11.574 \times H4.952$ in, 2.808 kg) • C-ring (Standard configuration). • Deployment Instruction Template (Standard). • Ceiling reserved network cable interface for connecting CS10/CS10-D. • Magnetic suction net cover (default white, black optional). • Installation instructions. • Safety rope.

Installation Steps

1. Drill holes in the ceiling.

- ① Find the cardboard for auxiliary punching in the product packaging.
- ② Use a marker to draw guidelines on the back of the ceiling panel (taking gypsum board as an example, the operation steps will not change for other materials). The guidelines should be drawn at the key points of the length and width of the gypsum board and connected to form a cross.
- ③ You can choose to mark the guidelines on your ceiling using the holes in the auxiliary punching cardboard, or you can choose to fix the cardboard to the ceiling for auxiliary punching.

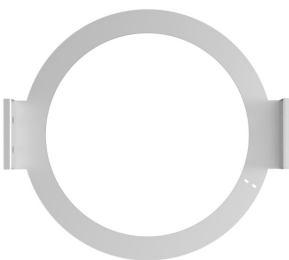


NOTE

1. When drilling holes, please make sure that you do a good job of safety protection, or have a professional operate.
2. Please note that the method shown below is a recommended installation method. You can perform the installation actions according to your actual situation, ensuring that the final installation is stable and secure. The specific process does not have strict sequential restrictions.

2. Install the assembly fixing bracket.

- If your ceiling panel is removable, you can directly remove the corresponding panel for drilling, and then install the assembly fixing bracket together with the ceiling panel into the ceiling, ensuring alignment with the hole.
- If your ceiling panel cannot be removed, you can locate the punched section of the C-ring, open the C-ring, so that you can screw the C-ring into the ceiling, or you can create a maintenance hole on the side of the installation hole to mount the C-ring to the ceiling.



3. Connect the network cable and cover it with the dust cover (CS10/CS10-D has not been pushed into the ceiling yet).

TIP

The device needs to be powered by PoE+.

4. Push CS10/CS10-D into the slot.

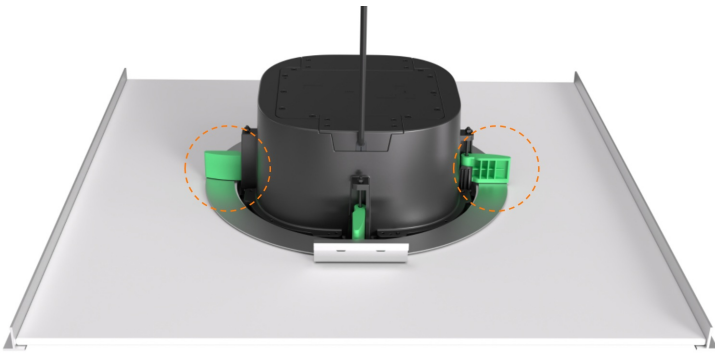
⊗ CAUTION

Please ensure there is someone nearby to assist during installation as pushing the device in will not automatically lock it in place. Please keep it lifted to prevent the device from falling.

5. Use a screwdriver to rotate the screw on the front side, so that the support arm mechanism opens and lowers until the support arm's ring fits snugly with the support bracket.

ⓘ NOTE

Do not overtighten the screws. Make sure the support foot fits snugly with the ring.



6. Attach the white mesh cover (optional black mesh cover available).



Method 3: On-Ceiling Deployment with Suspension Ropes

Introduction

Accompanying suspension accessories and supporting customers in the suspended installation of CS10 & CS10-D.

Precautions before Installation

Before installation, there are some important points you need to know about the installation process, so that CS10/CS10-D can better adapt to your ceiling.

Item	Description
------	-------------

<p>Ceiling Installation Guidelines</p>	<p>If your ceiling meets the following requirements, you can use the suspension ropes to deploy devices:</p> <ul style="list-style-type: none"> • Ceiling with a load capacity greater than 4.7kg per square meter. Note: Different materials have different load-bearing capacities for ceilings. Adjustments should be made according to the actual load-bearing capacity of the ceiling. • The ceiling thickness should not exceed 3.5 cm. • The distance between the top of your ceiling and the ceiling surface layer should be at least 25cm. • If your ceiling is still under construction, you may consider reserving CS10/CS10-D installation positions from the beginning.
<p>Installation location recommendation</p>	<ul style="list-style-type: none"> • Installation position: It is recommended to use the Yealink deployment tool. • Installation height: Refer to the Yealink Ceiling Speaker Coverage Area to determine the installation height.
<p>Security operation recommendations</p>	<p>The installation of CS10/CS10-D requires a certain level of professional expertise, so it is recommended to entrust the operation to professional installation workers as much as possible. If you choose to install it yourself, make sure that you have someone assist you.</p>
<p>Preparation before installation</p>	<ul style="list-style-type: none"> • Professional ceiling installation tools, including but not limited to ladders, power screwdrivers, etc. (to be provided by user). • CS10/CS10-D ($\Phi 294 \times H125.8$ mm / $\Phi 11.574 \times H4.952$ in, 2.808 kg) • C-ring (Standard configuration). • Deployment Instruction Template (Standard). • Ceiling reserved network cable interface for connecting CS10/CS10-D. • Magnetic suction net cover (default white, black optional). • Installation instructions. • Safety rope.

Installation Steps

1. Run wires to the device locations.

2. Connect the Ethernet cable and install the dust cover with screws.

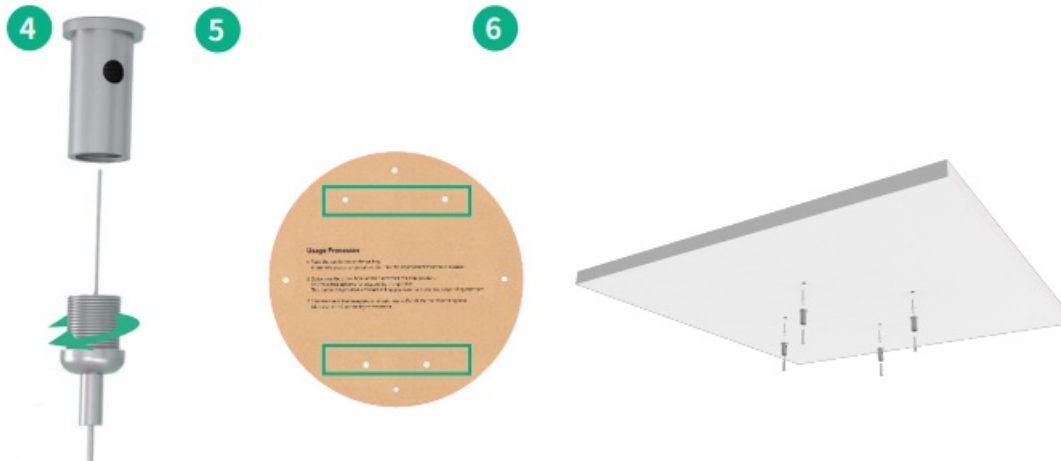


3. Remove the two screws from the opposite side of the dust cover. Ensure that the green outlined area in the illustration has four screw holes available for securing the copper pillar.



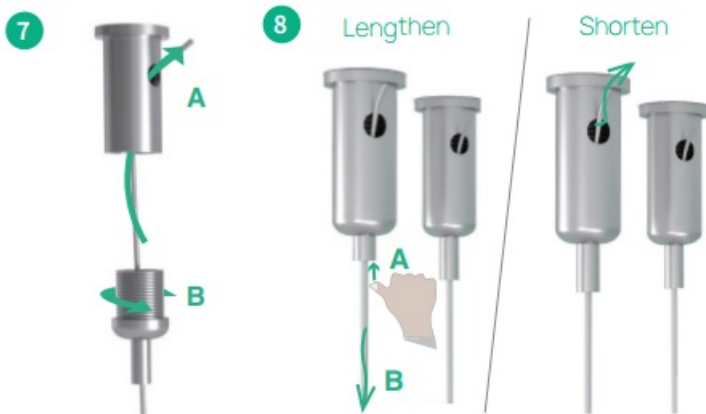
4. Loosen the wire lock from the suspension rope.
5. Use the deployment instruction template to mark hole positions and drill holes

6. Insert the expansion nuts and then use expansion screws to fix the wire lock.



7. Thread the suspension rope through the wire lock and tighten the wire lock. Make sure that the wire locks are securely installed on the ceiling by gently dragging the suspension rope.

8. Adjust the rope to the appropriate length and cut off the excess part.



9. Tighten the copper pillar onto the CS10.

10. Attach the hook on the suspension rope to the copper pillar and connect the Ethernet cable.



11. Thread the safety rope through the hole in the mesh cover; Wrap the safety rope around the support arm of the CS10, Then thread the safety rope through the washer. Use tweezers to secure the washer.



12. Attach the mesh cover to the CS10. The magnets will hold it in place.



Method 4: On-Ceiling Deployment with Suspension Ropes

Introduction

Accompanying suspension accessories and supporting customers in the suspended installation of CS10 & CS10-D.

Precautions Before Installation

Before installation, there are some important points you need to know about the installation process so that CS10/CS10-D can better adapt to your ceiling.

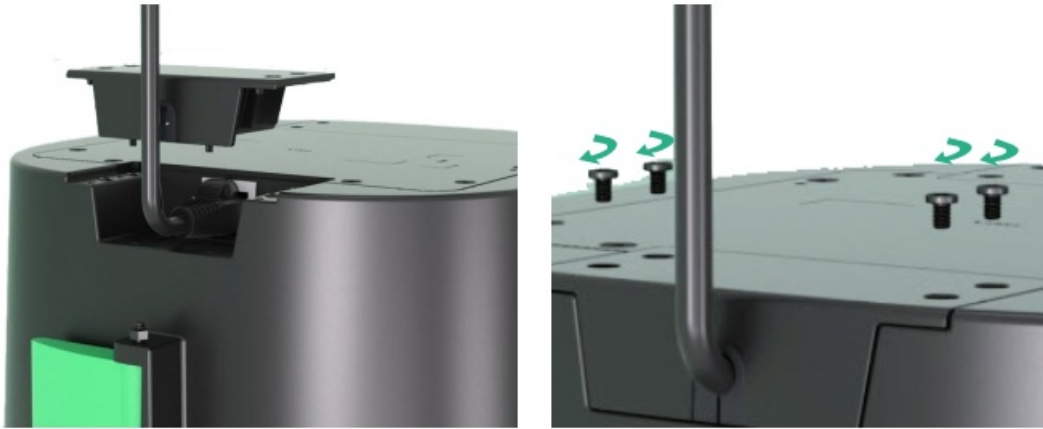
Item	Description
------	-------------

Ceiling Installation Guidelines	<p>If your ceiling meets the following requirements, you can use the suspension ropes to deploy devices:</p> <ul style="list-style-type: none"> • Ceiling with a load capacity greater than 4.7kg per square meter. Note: Different materials have different load-bearing capacities for ceilings. Adjustments should be made according to the actual load-bearing capacity of the ceiling. • The ceiling thickness should not exceed 3.5 cm. • The distance between the top of your ceiling and the ceiling surface layer should be at least 25cm. • If your ceiling is still under construction, you may consider reserving CS10/CS10-D installation positions from the beginning.
Installation location recommendation	<ul style="list-style-type: none"> • Installation position: It is recommended to use the Yealink deployment tool. • Installation height: Refer to the Yealink Ceiling Speaker Coverage Area to determine the installation height.
Security operation recommendations	<p>The installation of CS10/CS10-D requires a certain level of professional expertise, so it is recommended to entrust the operation to professional installation workers as much as possible.</p> <p>If you choose to install it yourself, make sure that you have someone assist you.</p>
Preparation before installation	<ul style="list-style-type: none"> • Professional ceiling installation tools, including but not limited to ladders, power screwdrivers, etc. (to be provided by user). • CS10/CS10-D ($\Phi 294 \times H125.8$ mm / $\Phi 11.574 \times H4.952$ in, 2.808 kg) • C-ring (Standard configuration). • Deployment Instruction Template (Standard). • Ceiling reserved network cable interface for connecting CS10/CS10-D. • Magnetic suction net cover (default white, black optional). • Installation instructions. • Safety rope.

Installation Steps

1. Run wires to the device locations.

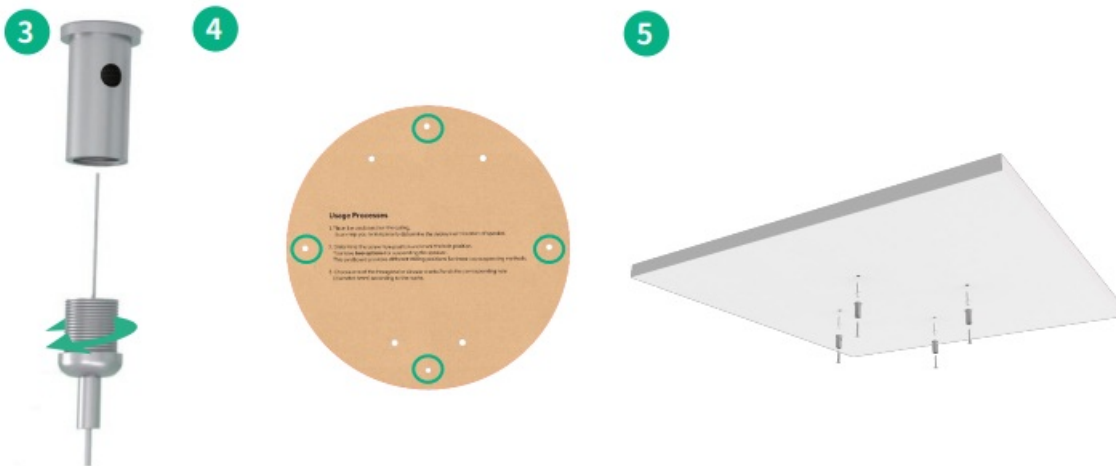
2. Connect the Ethernet cable and install the dust cover with screws.



3. Loosen the wire lock from the suspension rope.

4. Use the deployment instruction template to mark hole positions and drill holes.

5. Insert the expansion nuts and then use expansion screws to fix the wire lock.



6. Unscrew and remove the clamps.



7. Thread the suspension cable through the screw hole and secure it in place using the hook of the suspension cable.

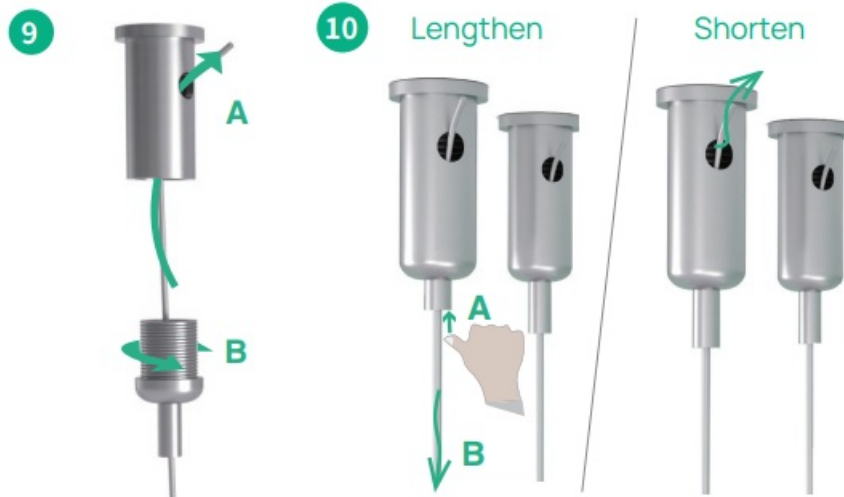


8. Thread the safety rope through the hole in the mesh cover; Wrap the safety rope around the support arm of the CS10; Then thread the safety rope through the washer; Use tweezers to secure the washer.



9. Thread the suspension rope through the wire lock and tighten the wire lock. Make sure that the wire locks are securely installed on the ceiling by gentle dragging the suspension rope.

10. Adjust the rope to the appropriate length and cut off the excess part.



11. Attach the mesh cover to the CS10. The magnets will hold it in place.



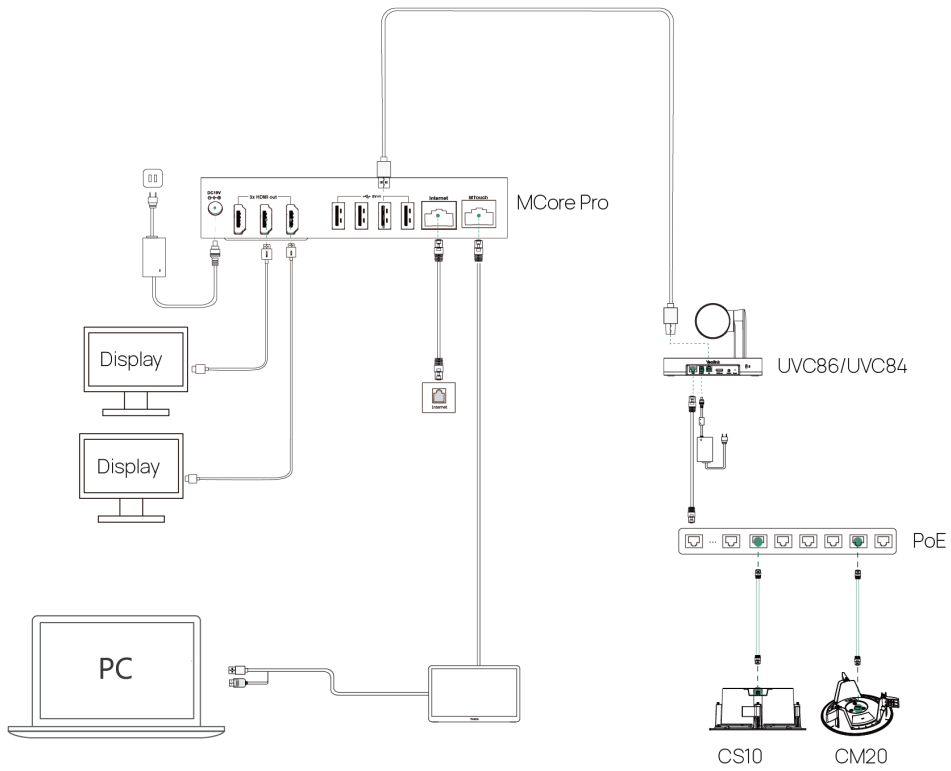
Connection

Connect to MVC 2nd or 3rd Gen Series

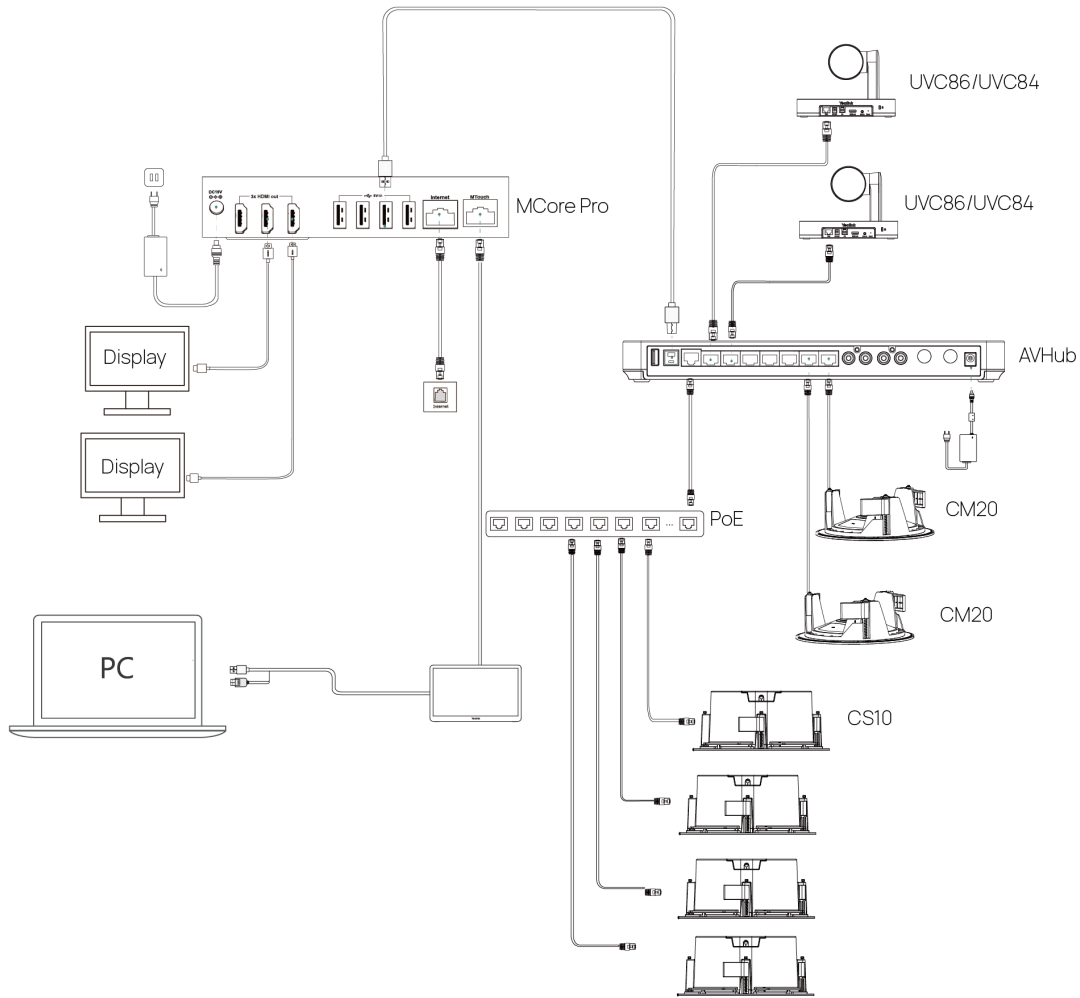
NOTE

- If you connect the CS10/CS10-D/CM20 to the MVC860-BASE KIT/MVC860/MVC840-BASE KIT/MVC840/MVC660/MVC640-Wireless/MVC640 (package contents without AVHub), **the CS10/CS10-D can only work with CM20, and the CM20 can only work with the CS10/CS10-D and the MSpeaker.**
- If you connect the CM20 to the UVC84 directly or via a switch, **the Line Out port of the UVC84 will become unavailable.**
- If you want to connect the CM20/CS10/CS10-D via a PoE switch, note that:
 - The switch is a Gigabit Ethernet switch **without EEE feature** (or the EEE feature can be disabled).
 - Do not use the Yealink RCH40 switch as it does not allow EEE to be disabled.
 - If you want to use a single RCH40 E2, it supports 2 CM20s + 2 CS10s/CS10-Ds, and it is not recommended to connect more than 3 speakers simultaneously to avoid the risk of insufficient power.

MVC 2nd or 3rd Gen Series without AVHub



MVC 2nd or 3rd Gen Series with AVHub

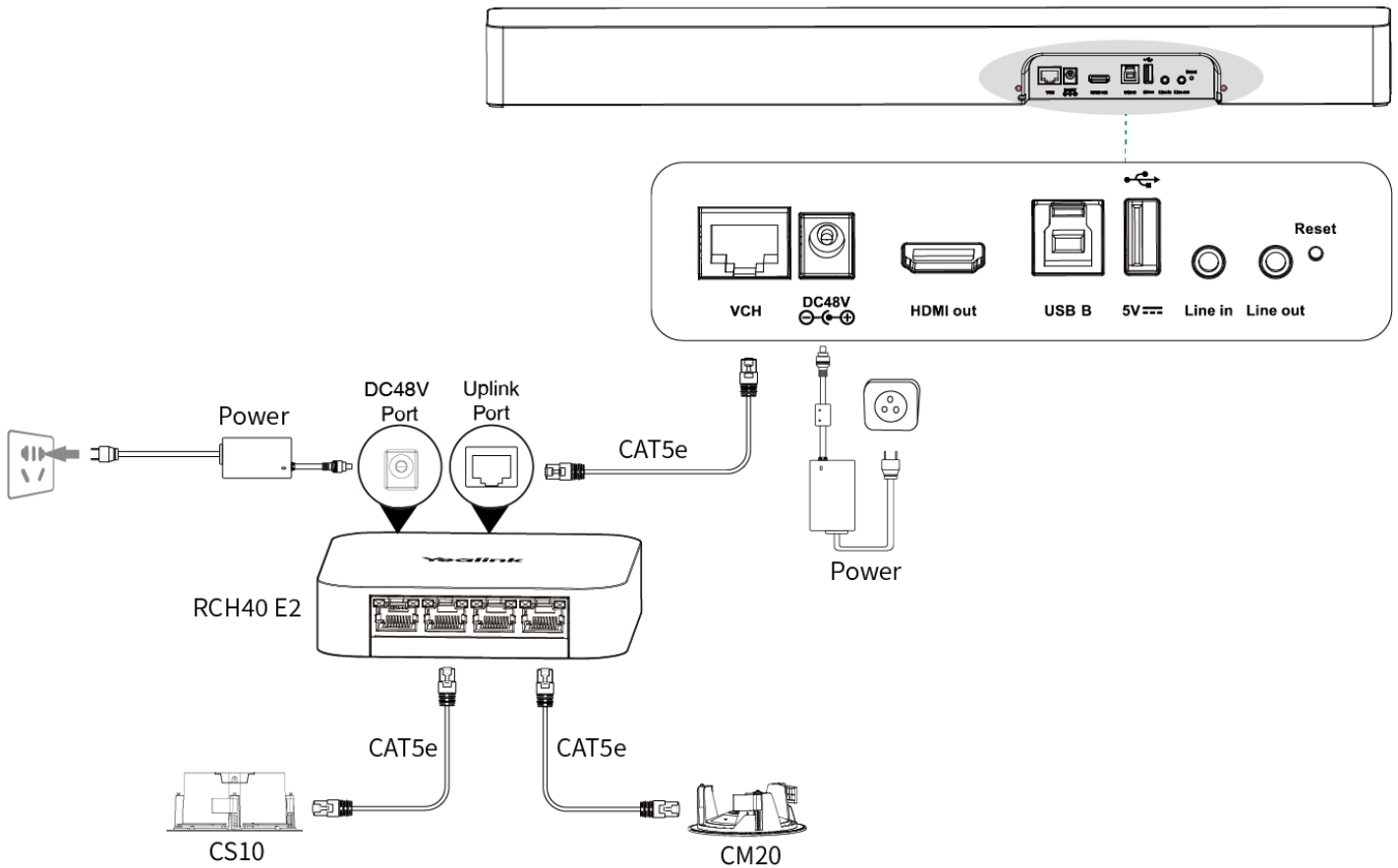


Connect to SmartVision 40/MeetingBar A40

NOTE

- For a single RCH40 E2, it supports 2 CM20s + 2 CS10s/CS10-Ds, and it is not recommended to connect more than 3 speakers simultaneously to avoid the risk of insufficient power.
- The following figure uses SmartVision 40 for illustration. The connection method of MeetingBar A40 is the same as SmartVision 40.
- When connecting to SmartVision 40/MeetingBar A40, CS10/CS10-D needs to be used with CM20.

SmartVision 40



FAQ

What is the compatible PoE for Yealink ProAudio devices?

What types of switches are recommended for Yealink CM20/CS10?

Is there a number limitation when directly connecting the Yealink ProAudio equipment to a single RCH40 E2/AVHub?

What audio devices can work with CM20/CS10 when CM20/CS10 is connected to Yealink host devices?

What is the maximum number of CM20 and CS10 supported by Yealink host devices?

CS10/CS10-D LED Indicators

LED Indicators	Introduction
Orange	<ul style="list-style-type: none"> • Initializing and not connected to a host device • Rebooting
Off	Powered off
Green	<ul style="list-style-type: none"> • On a call • Idle
Flash red and green alternately	Searching devices
Flash orange slowly	Upgrading

Flash red	Network exception
-----------	-------------------