

Yealink

Crystal Clear, High Fidelity

AI-Powered Ceiling Audio Solution for MVC Series

Yealink CM20 features an 83mm low-profile design and a detachable magnetic cover with a snap-on attachment (available in black and white color options). The overall design ensures seamless integration and aesthetic appeal, while facilitating effortless deployment and maintaining the integrity of the ceiling.



16-mic arrays



8 pickup zones



3m premium quality full-duplex audio*



30m² effectively pick-up range*



AI Dynamic Noise Cancellation



AI AEC



CM20

AI-Powered Beamforming Microphone

The Yealink CS10, available in black and white, features a low-profile (120mm depth) 2-way coaxial design and a removable magnetic suction mesh cover. The CS10 blends high-quality audio with an elegant, minimalist design, making it a perfect match for contemporary conference rooms.



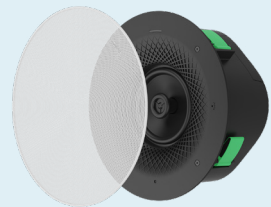
Low-profile Design



120° Coverage



Speech Emphasizing



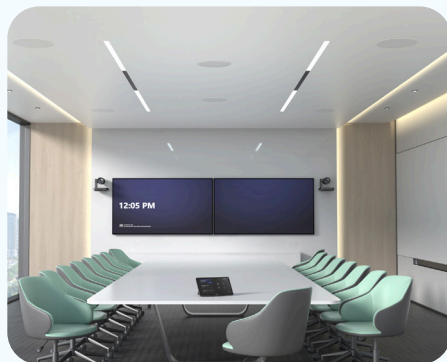
CS10

Network Ceiling Loudspeaker

Practical and Aesthetic Integration



Medium room



Large room



Divisible room



CM20 Specifications



CS10 Specifications



Yealink MVC Series